

ETHERNET PRIVATE LINE AND EPATH SERVICES

Frontier has deployed an MEF 2.0 Certified Ethernet network across our 29 state territory, delivering the performance, capability and flexibility you need to meet the demands of your customers. Whether you require point-to-point, or point-to-multipoint connections, Frontier has the expertise to design a solution that meets your needs and deploy it using our specialized Ethernet service excellence teams. Our innovative EPATH service provides you access to Frontier's LATAs via a single interconnection to our network, increasing your efficiency and connecting you to new markets.

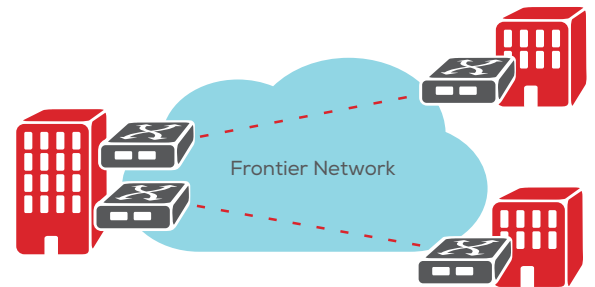
BENEFITS

- Robust set of Ethernet capabilities including switched and non-switched services, private and shared services.
- Highly scalable, with speeds of up to 10Gbps.
- Class of Service (CoS) options allow you to prioritize critical traffic.
- Quality of Service (QoS) metrics backed by Service level agreements assure high levels of network performance.
- Near real-time portal for management and validation of SLA performance.

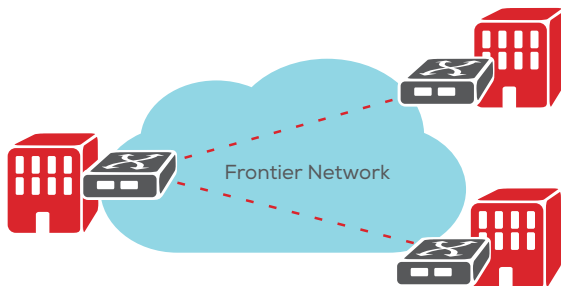


ETHERNET PRIVATE LINE

Frontier's Ethernet Private Line (EPL) provides connectivity for private, secure data transport. It uses a dedicated User-to-Network Interface [UNI] for point-to-point connections and a single Ethernet Virtual Connection [EVC] for each UNI pair. Ideal for large data sets and applications that require high performance such as voice and video applications.



ETHERNET PRIVATE LINE



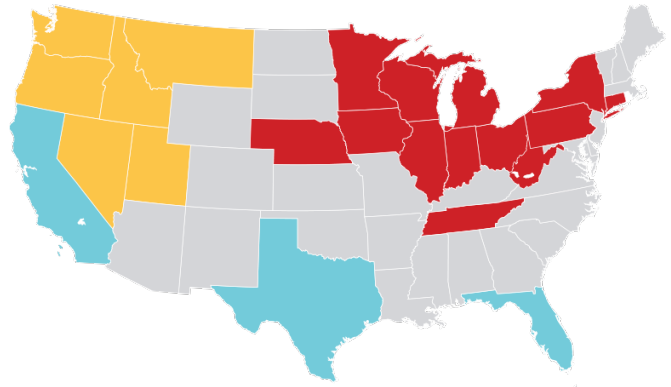
ETHERNET VIRTUAL PRIVATE LINE

ETHERNET VIRTUAL PRIVATE LINE

Allow a single, multiplexed interconnection to connect end-user locations over multiple Ethernet Virtual Connections (EVCs). This regional hub Network-to-Network Interface (NNI) is ideal for connecting your customer's Local Area Networks (LANs), data centers and remote sites.

EPATH

Frontier offers a cost-effective and efficient method to extend WAN connectivity throughout our footprint. Our single OSS Infrastructure allows you to share one ENNI across multiple Frontier LATAs when using our EVPL service. This innovative approach provides greater integration for your customer's regional or national WANs and saves you time and resources by reducing the number of required interconnects.



■ Available Now
 ■ Available Late 2016
 ■ Available in 2017

ETHERNET SERVICE LEVEL AGREEMENT METRICS

	Silver	Gold	Platinum
Network Availability	———	Copper = 99.9% Fiber = 99.95%	Copper = 99.95% Fiber = 99.99%
Round-trip Delay Percentile	———	99.9%	95%
Data Delivery Ratio Objective	———	99.95%	99.9%
Frame Jitter Directionality	———	2-way	2-way

FRONTIER WHOLESALE: DID YOU KNOW?

Frontier's expanded network has over 140,000 route miles of fiber, so we can provide you coverage where you need. Our Ethernet enabled network is available in over 1,300 wire centers, making it easy for you to reach us. We've also doubled the number of representatives in our service centers to better assist our customers. Frontier Wholesale has deep experience and expertise in Ethernet services, and participates in MEF's Ethernet Interconnect Project, which is working to simplify interconnects for Wholesale customers.

Thank you for taking the time to learn more about Frontier Wholesale, and the cutting-edge services we can offer you. Be sure to ask your account manager about all the changes we've made to our business to better help you grow yours.

frontier.com/wholesale
wholesale_inquiry@ftr.com